

Aquis Exchange Monthly Statistics

Month: Jun-2019
 Total value traded (EUR): € 29,248,670,467
 Auction on Demand value traded (EUR): € 730,502,008

Monthly Top Stocks by Market Share (continuous trading)

Stock	Symbol	Market Share
Cofinimmo	COFBb	12.4%
Euronext NV	ENXp	12.0%
Kemira OYJ	KEMIRh	11.7%
Metso OYJ	METSOH	9.8%
Unipol Gruppo Finanziario SpA	UNIm	9.7%
Orion OYJ	ORNBVh	9.4%
Telenet Group Holding NV	TNETb	9.4%
Brembo SpA	BREm	9.2%
UnipolSai Assicurazioni SpA	USm	9.2%
Outokumpu OYJ	OUT1Vh	8.8%
Getinge AB	GETIBs	8.7%

Monthly Top Stocks by Value (EUR)

Stock	Symbol	Value Traded
SAP AG	SAPd	€ 272,942,350
Enel Global Trad	ENELm	€ 263,577,730
Siemens AG	SIEd	€ 245,925,160
Rio Tinto PLC	RIOI	€ 242,844,550
Total SA	FPp	€ 240,762,580
Sanofi	SANp	€ 225,741,410
LVMH Moët Hennessy Louis Vuitton SA	MCp	€ 225,230,650
Adidas AG	ADSd	€ 217,189,310
Airbus	AIRp	€ 209,255,490
Iberdrola SA	IBEd	€ 199,571,680
ASML Holding NV	ASMLa	€ 185,177,400
Infineon Technologies AG	IFXd	€ 183,605,620
Intesa Sanpaolo SpA	ISPM	€ 183,323,990
BASF SE	BASd	€ 182,939,020
UniCredit SpA	UCGM	€ 179,583,930



UK Top Stocks

Stock	Symbol	Market Share
Carnival PLC	CCLl	8.0%
Halma PLC	HLMAI	6.7%
Capita PLC	CPll	6.6%
Rio Tinto PLC	RIOI	6.5%
DCC Plc	DCCl	6.2%



Italian Top Stocks

Stock	Symbol	Market Share
Unipol Gruppo Finanziario SpA	UNIm	9.7%
Brembo SpA	BREm	9.2%
UnipolSai Assicurazioni SpA	USm	9.2%
Pirelli and C SpA	PIRCm	8.3%
Salvatore Ferragamo Italia SpA	SFERm	8.3%



Dutch Top Stocks

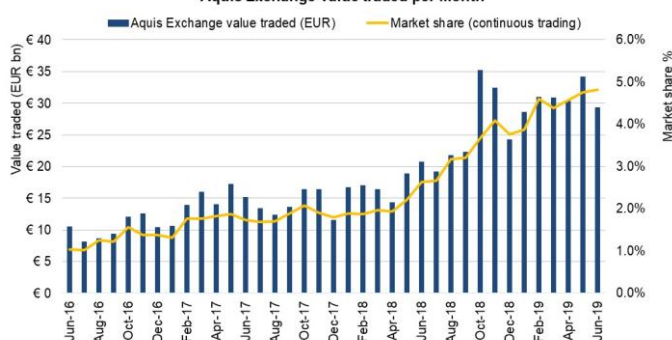
Stock	Symbol	Market Share
Koninklijke Vopak NV	VPKa	6.7%
Altice Europe	ATCa	6.2%
Heineken NV	HEIAa	6.0%
Aalberts Industries NV	AALBa	5.3%
Philips Lighting NV	LIGHTa	5.1%



Swedish Top Stocks

Stock	Symbol	Market Share
Getinge AB	GETIBs	8.7%
SSAB AB	SSABAs	8.2%
Securitas AB	SECUBs	7.7%
Essity Aktiebolag AB B	ESSIBs	7.5%
Swedish Match AB	SWMAS	7.4%

Aquis Exchange value traded per month



Trading by Market

Market	Value Traded
Paris	€ 5,233,000,980
London	€ 5,228,524,530
Frankfurt	€ 5,083,684,160
Milan	€ 2,405,275,730
Amsterdam	€ 1,584,873,450
Stockholm	€ 1,519,129,930
Madrid	€ 1,304,725,380
Copenhagen	€ 905,526,470
Helsinki	€ 629,649,840
Oslo	€ 548,982,320
Brussels	€ 497,431,600
London IDR	€ 431,863,680
Lisbon	€ 129,829,700
Vienna	€ 86,282,140



German Top Stocks

Stock	Symbol	Market Share
HeidelbergCement AG	HEId	7.1%
Siemens AG	SIEd	6.2%
Deutsche Telekom AG	DTEd	6.1%
Continental AG	CONd	6.0%
Merck KGaA	MRKd	5.9%



French Top Stocks

Stock	Symbol	Market Share
Euronext NV	ENXp	12.0%
Veolia Environnement SA	VIEd	7.3%
Pernod-Ricard SA	RIp	6.7%
Accor SA	ACp	6.7%
Renault SA	RNOp	6.2%



Spanish Top Stocks

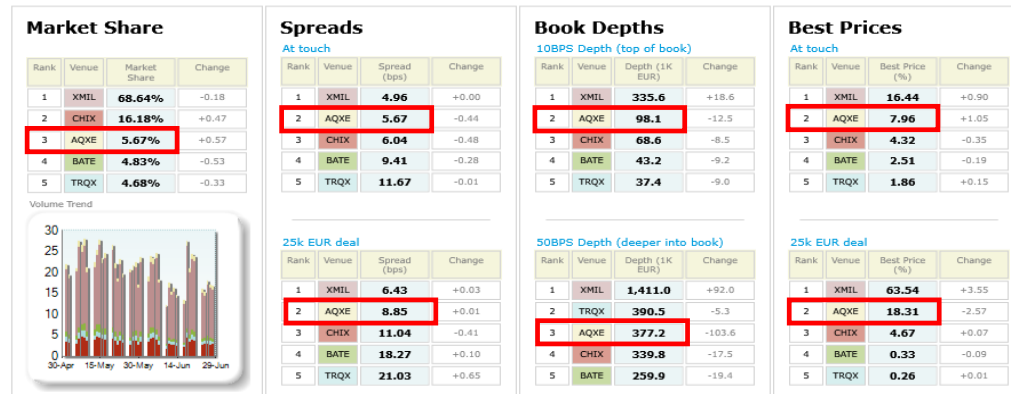
Stock	Symbol	Market Share
Iberdrola SA	IBEd	6.6%
Mediaset Espana Comunicacion SA	TL5e	6.6%
Siemens Gamesa Renewable Energy	SGREe	6.6%
Red Electrica Corp SA	REEe	6.6%
Ferrovial SA	FERe	6.4%



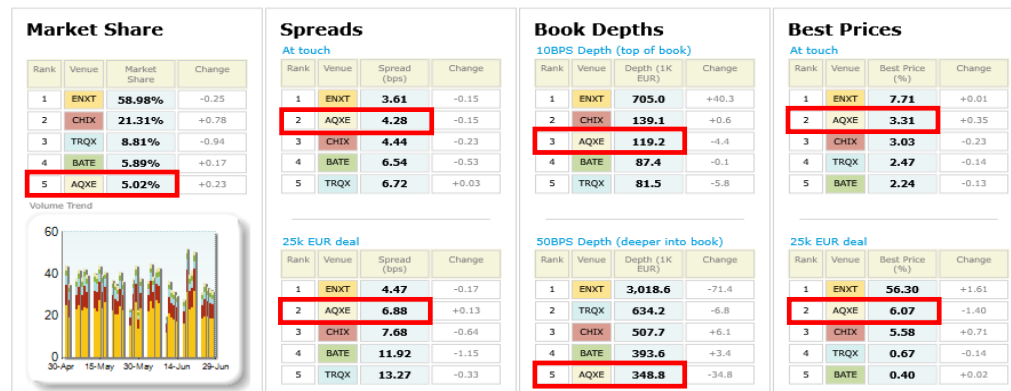
Danish Top Stocks

Stock	Symbol	Market Share
GN Store Nord A/S	GNc	8.5%
AP Moeller - Maersk A/S	MAERBc	7.6%
ISS A/S	ISSc	7.5%
DSV A/S	DSVc	7.4%
Pandora A/S	PNDORc	7.2%

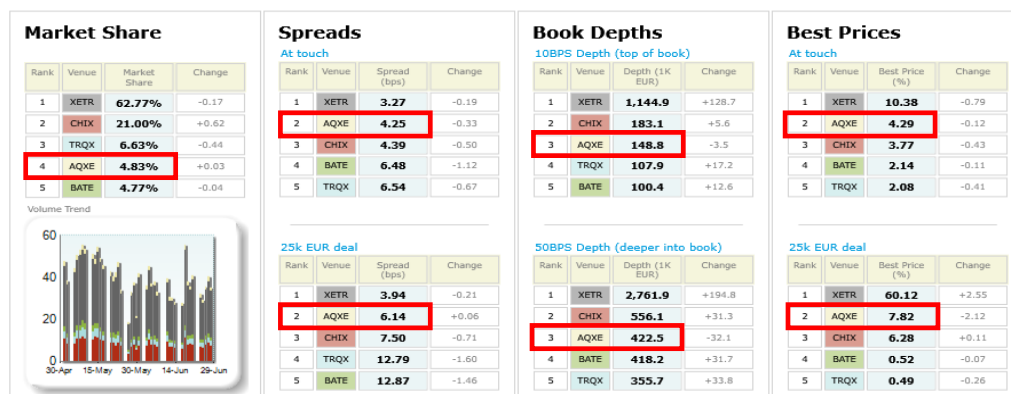
Italian 40 LiquidMetrix Battlemat*



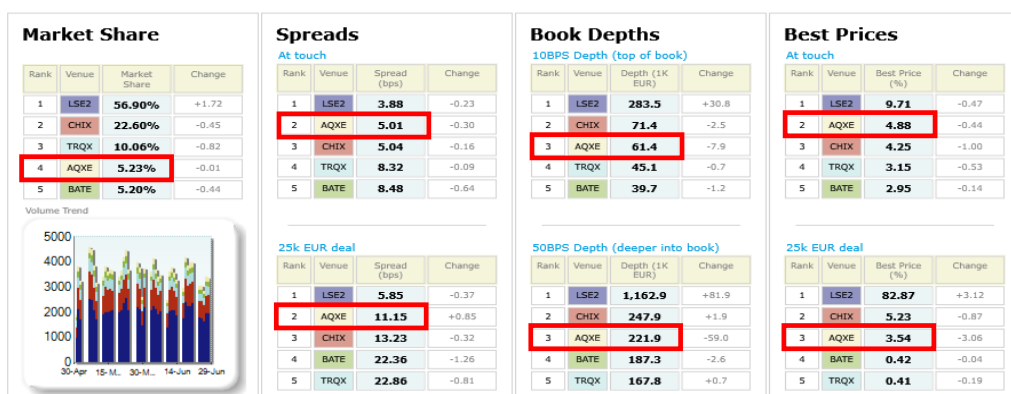
French 40 LiquidMetrix Battlemat*



German 30 LiquidMetrix Battlemat*



UK 100 LiquidMetrix Battlemat*



Italian 40 LiquidMetrix Battlemat*

Percentage Best Price Analysis (Touch Prices)

Venue	Best Bid Price	Equal Best Bid Price	Not Best Bid Price	Best Ask Price	Equal Best Ask Price	Not Best Ask Price
AQXE	7.69%	56.02%	36.29%	8.23%	55.56%	36.21%
BATE	2.46%	26.60%	70.94%	2.56%	26.48%	70.96%
CHIX	4.27%	45.73%	50.00%	4.37%	44.97%	50.65%
TRQX	1.84%	15.56%	82.60%	1.89%	15.66%	82.45%
XMIL	16.64%	58.67%	24.69%	16.24%	57.92%	25.84%

French 40 LiquidMetrix Battlemat*

Percentage Best Price Analysis (Touch Prices)

Venue	Best Bid Price	Equal Best Bid Price	Not Best Bid Price	Best Ask Price	Equal Best Ask Price	Not Best Ask Price
AQXE	3.44%	67.11%	29.45%	3.19%	66.38%	30.43%
BATE	2.15%	39.65%	58.20%	2.33%	39.64%	58.02%
CHIX	3.01%	66.81%	30.18%	3.04%	66.23%	30.73%
ENXT	7.58%	75.13%	17.29%	7.83%	74.69%	17.47%
TRQX	2.41%	40.54%	57.05%	2.53%	40.27%	57.20%

German 30 LiquidMetrix Battlemat*

Percentage Best Price Analysis (Touch Prices)

Venue	Best Bid Price	Equal Best Bid Price	Not Best Bid Price	Best Ask Price	Equal Best Ask Price	Not Best Ask Price
AQXE	4.35%	64.81%	30.84%	4.23%	63.73%	32.04%
BATE	2.05%	33.97%	63.98%	2.22%	33.96%	63.82%
CHIX	3.71%	59.56%	36.72%	3.82%	59.01%	37.17%
TRQX	1.95%	34.40%	63.65%	2.21%	34.68%	63.11%
XETR	10.32%	69.68%	20.00%	10.44%	68.88%	20.68%

UK 100 LiquidMetrix Battlemat*

Percentage Best Price Analysis (Touch Prices)

Venue	Best Bid Price	Equal Best Bid Price	Not Best Bid Price	Best Ask Price	Equal Best Ask Price	Not Best Ask Price
AQXE	4.80%	57.59%	37.61%	4.97%	57.77%	37.26%
BATE	2.88%	24.52%	72.61%	3.02%	25.27%	71.70%
CHIX	4.07%	56.92%	39.01%	4.43%	57.67%	37.90%
LSE2	10.04%	67.67%	22.29%	9.38%	66.82%	23.80%
TRQX	3.10%	27.12%	69.78%	3.20%	27.64%	69.15%

LiquidMetrix definitions:

- **Market share** is based on on-book value traded during continuous trading (excluding auctions). The share is calculated by averaging over all stocks in the index.
- **Spreads** measure the bid to offer spread of the best visible orders in the book. The result is averaged over the stocks in the index and is based on measurements of the order book every 30 seconds. The value for the spread is quoted in basis points (0.01%).
- **Market depth** measures the amount of visible liquidity (bids and offers) in the order book within 10 and 50 BPS of mid price. The result is averaged over the stocks in the index and is based on measurements of the order book every 30 seconds. This is quoted in '000s of EUR.
- **Best Price** % measures how often each venue posts an absolute best price (no ties) for stocks. The result is averaged over the stocks in the index and is based on measurements of the order book every 5 seconds.
- **Equal Best Price** % shows the percentage of time that each venue had an equal best bid or equal best offer price. The stats are based on full-depth order books taken